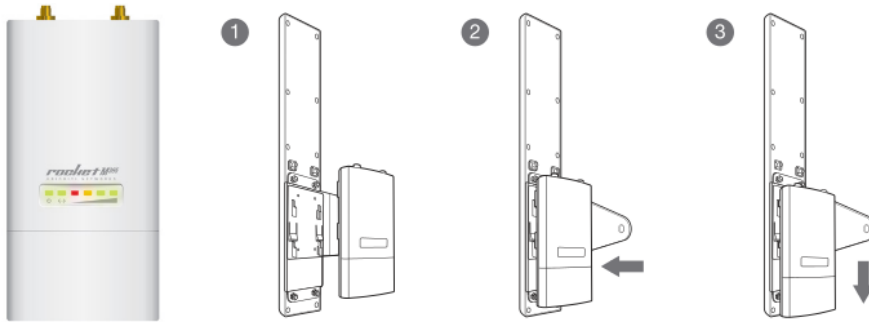


## ROCKET M3: 3.3-3.7GHz Hi Power 2x2 MIMO AirMax TDMA BaseStation



**airMAX**  
MIMO TDMA Protocol

**COMPATIBLE ANTENNAS**

AirMax Sector 3G-18-120  
Rocket Dish 3G-26

SYSTEM INFORMATION							
Processor Specs	Atheros MIPS 24KC, 400MHz						
Memory Information	64MB SDRAM, 8MB Flash						
Networking Interface	1 X 10/100 BASE-TX (Cat. 5, RJ-45) Ethernet Interface						
REGULATORY / COMPLIANCE INFORMATION							
RoHS Compliance	YES						
OPERATING FREQUENCY 3300MHz-3700MHz							
TX POWER SPECIFICATIONS			RX SPECIFICATIONS				
	DataRate	Avg. TX	Tolerance		DataRate	Sensitivity	Tolerance
AirMax	MCS0	25 dBm	+/-2dB	Airmax	MCS0	-94 dBm	+/-2dB
	MCS1	25 dBm	+/-2dB		MCS1	-93 dBm	+/-2dB
	MCS2	25 dBm	+/-2dB		MCS2	-90 dBm	+/-2dB
	MCS3	25 dBm	+/-2dB		MCS3	-89 dBm	+/-2dB
	MCS4	24 dBm	+/-2dB		MCS4	-86 dBm	+/-2dB
	MCS5	23 dBm	+/-2dB		MCS5	-83 dBm	+/-2dB
	MCS6	22 dBm	+/-2dB		MCS6	-77 dBm	+/-2dB
	MCS7	20 dBm	+/-2dB		MCS7	-74 dBm	+/-2dB
	MCS8	25 dBm	+/-2dB		MCS8	-93 dBm	+/-2dB
	MCS9	25 dBm	+/-2dB		MCS9	-91 dBm	+/-2dB
	MCS10	25 dBm	+/-2dB		MCS10	-89 dBm	+/-2dB
	MCS11	25 dBm	+/-2dB		MCS11	-87 dBm	+/-2dB
	MCS12	24 dBm	+/-2dB		MCS12	-84 dBm	+/-2dB
	MCS13	23 dBm	+/-2dB		MCS13	-79 dBm	+/-2dB
	MCS14	22 dBm	+/-2dB		MCS14	-78 dBm	+/-2dB
MCS15	20 dBm	+/-2dB	MCS15	-75 dBm	+/-2dB		
PHYSICAL / ELECTRICAL / ENVIRONMENTAL							
Enclosure Size	16cm length x 8cm width x 3cm height						
Weight	0.5 kg						
RF Connector	2x RPSMA (Waterproof)						
Enclosure Characteristics	Outdoor UV Stabilized Plastic						
Mounting Kit	Pole Mounting Kit included						
Max Power Consumption	6.5 Watts						
Power Supply	24V, 1A POE Supply Included						
Power Method	Passive Power over Ethernet (pairs 4,5+; 7,8 return)						
Operating Temperature	-30C to 75C						
Operating Humidity	5 to 95% Condensing						
Shock and Vibration	ETSI300-019-1.4						