



Quick Start Guide

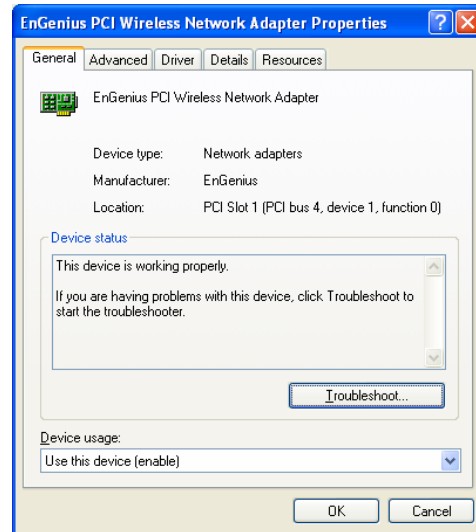
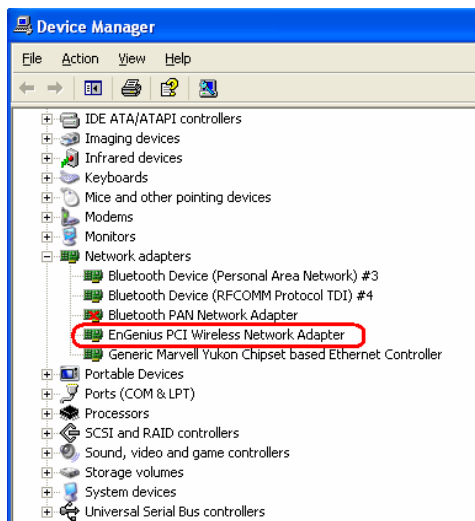
EPI-3601S Wireless LAN PCI Adapter

Quick Installation

Important: Install the WLAN Adapter utilities before inserting the WLAN Adapter into your computer.



1. Insert product CD into your optical disk drive & open Setup file (EPI-3601Sxxxx.exe)
2. Restart your PC as instructed by SETUP.
3. Insert EPI-3601S in one of your available PCI slot in your PC.
4. Check if EPI-3601S is installed correctly in your PC/Notebook.
5. Open device manager to check if it matches the following screen shots.



Connect to a Wireless Network

Important: You may be already connected to a default AP in your network environment.



1. If you see **ICN_11g** in your Taskbar, it probably means that you are already **connected** to a wireless network.
2. If you **CANNOT**, you will have to connect to a Wireless Network manually.

Using EnGenius Client Utility Configuration

1. Open the EnGenius Client Utility and select **Profile Management**.
2. Press **Scan** to find the networks available.
3. Click Activate to connect to that SSID.

